



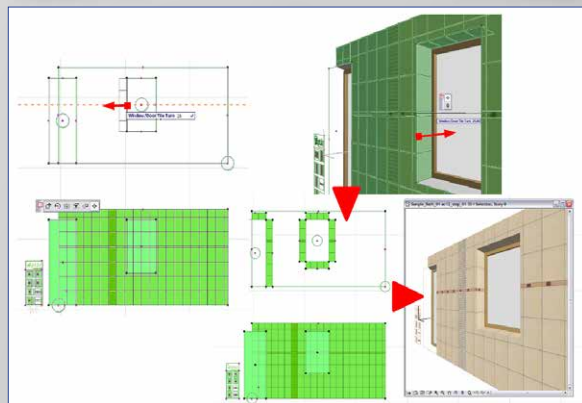
# [eptar] Tiling



ArchiCAD solution for room tiling. User can define tiles, sizes and listing parameters. 2D drawings and 3D model definition in one, easy step.

## Key features:

- User defined tile textures (pictures)
- free size definition
- easy and fast design process
- exact listing results
- perfect visualisation



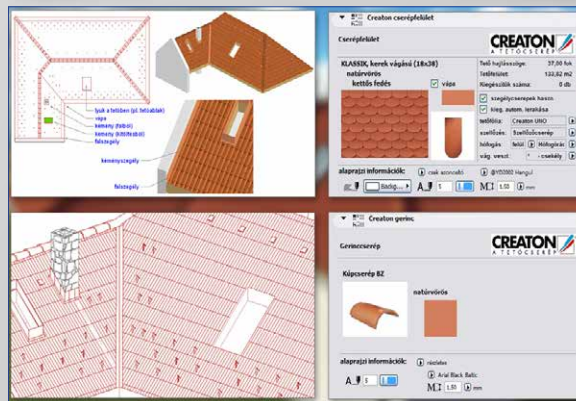
# Mediterrán and Creaton RoofTiling designer



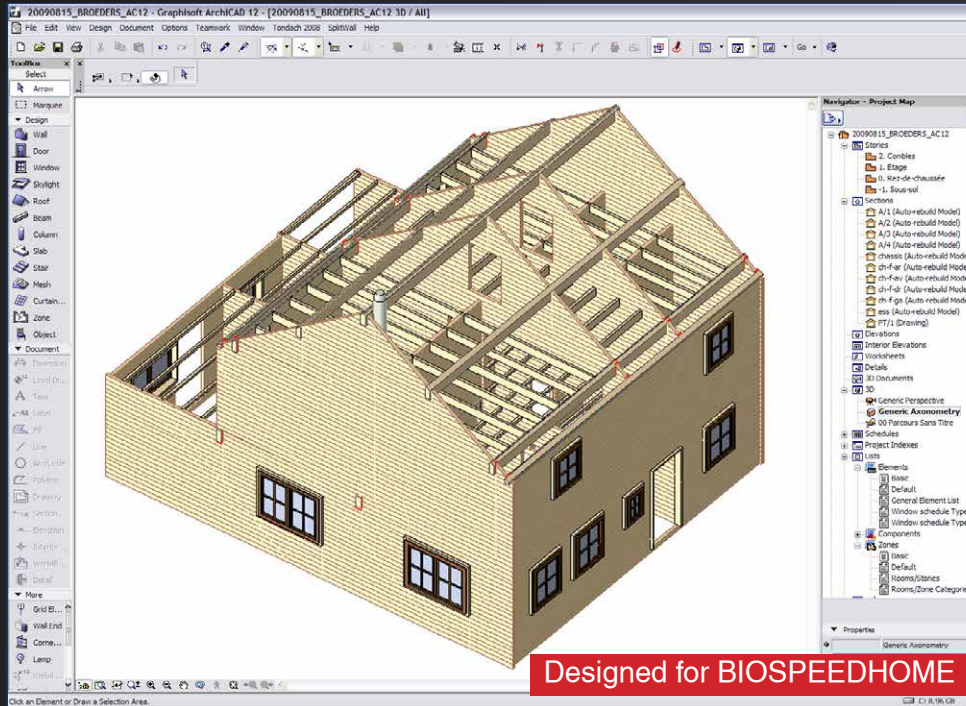
ArchiCAD solution for the roof tiling process. User defined roofs - tiling visualisation and calculation with an easy one step method. Supports photo realistic textures (fast) or real 3D tile models.

## Key features:

- one step, easy to use process
- Individual accessory placement
- realistic visualisation and textures
- exact component lists
- real manufacturer products implemented
- complex system definition in one step



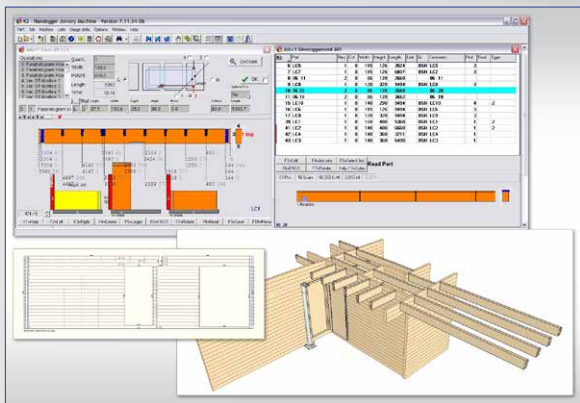
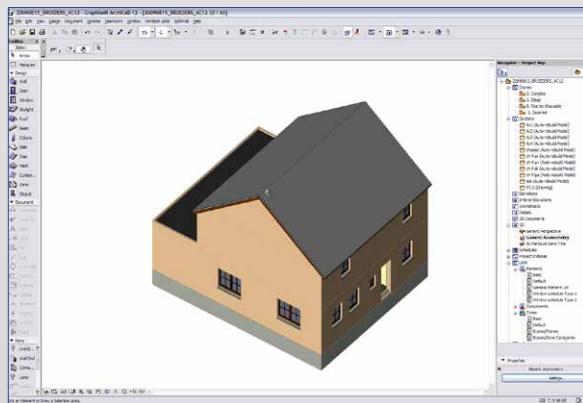
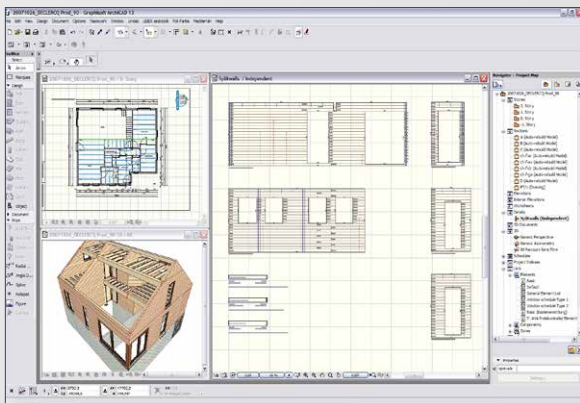
# Splitwall WoodHouse designer



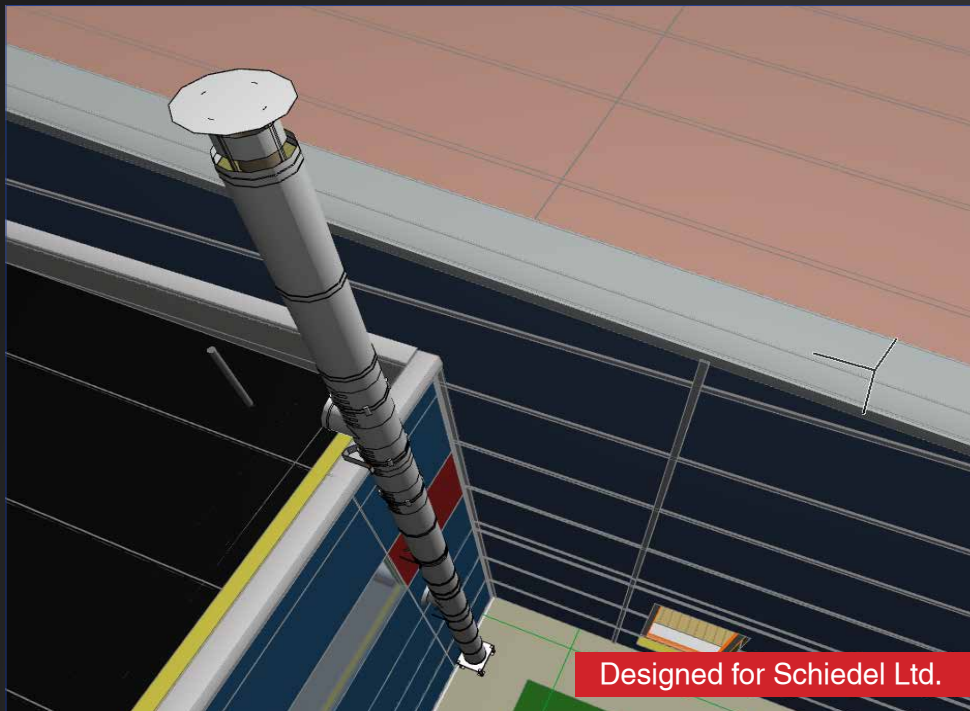
Our client wanted to control the CNC cutting machine directly from ArchiCAD. We developed an application to define log cuts and drills in ArchiCAD. The final result is a tabtext file, which can be used by the CNC machine directly.

## Key features:

- architectural design in ArchiCAD
- automatically generated wall drawings
- automatically calculated log cuts
- cutting optimisation
- exported cutting lists with log IDs
- easy and fast engineer work
- real manufacturer products



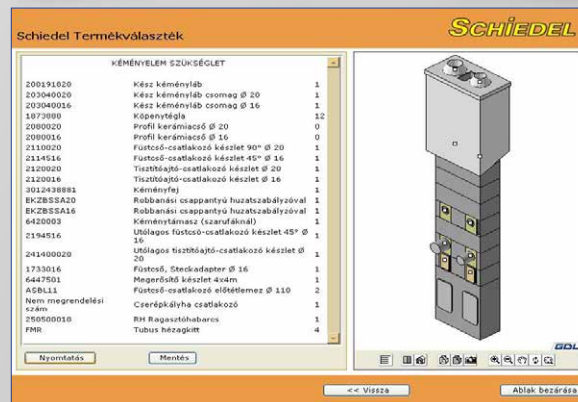
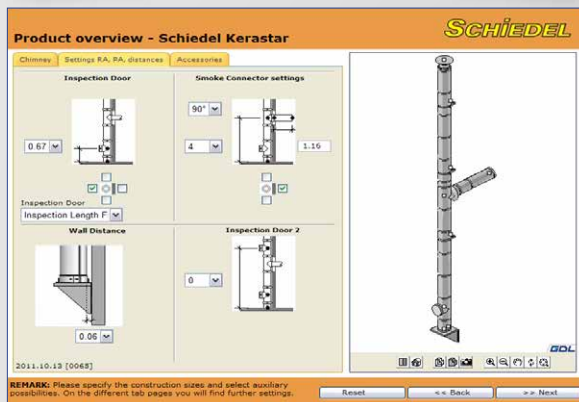
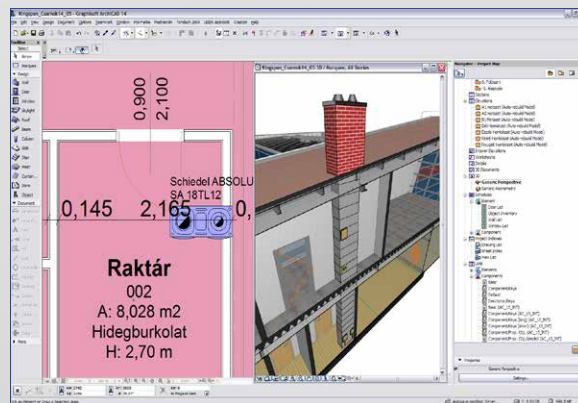
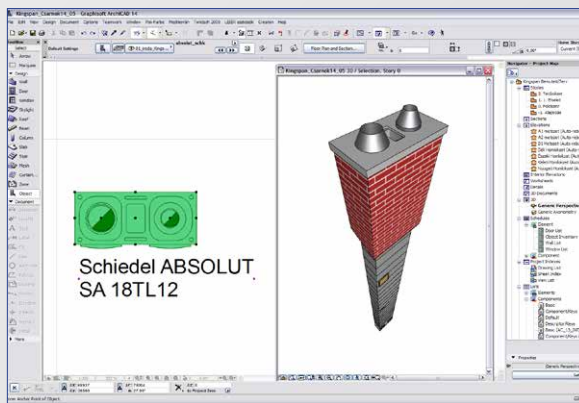
# Schiedel Chimney System



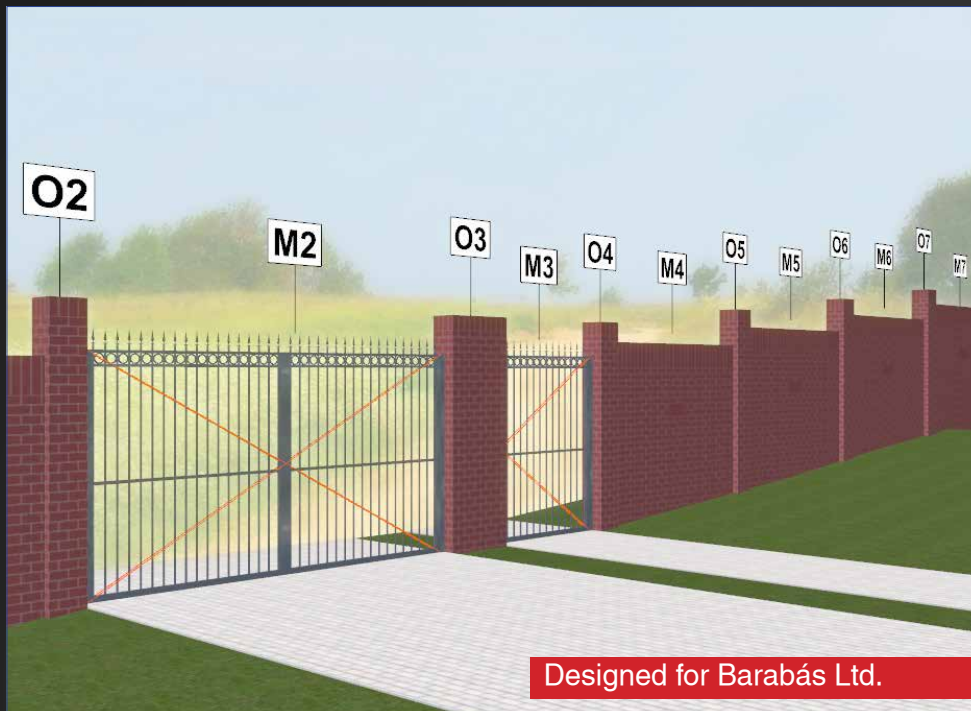
This is a solution for a one step chimney calculation. The application is available in ArchiCAD and online (GDL Webcontrol) as well. The solution was created for 7 different languages in Eastern Europe.

## Key features:

- easy, architect friendly user interface
- exact 3D model and 2D drawings
- easy connection definition
- easy accessory list definition
- real manufacturer products
- complex system definition in one step
- exact component lists
- real visualisation



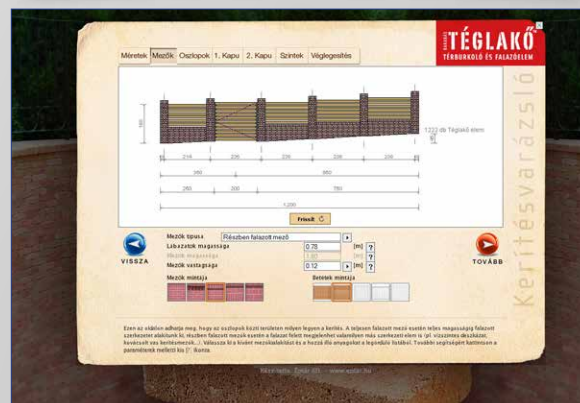
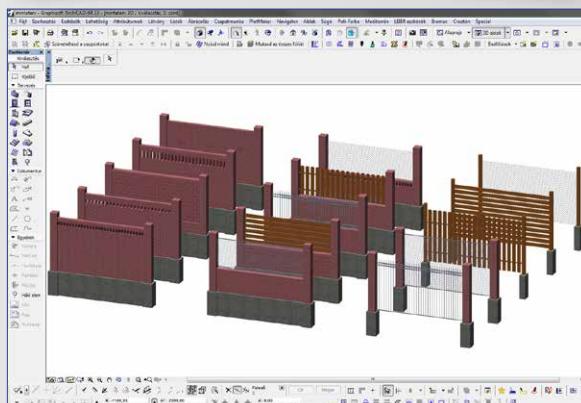
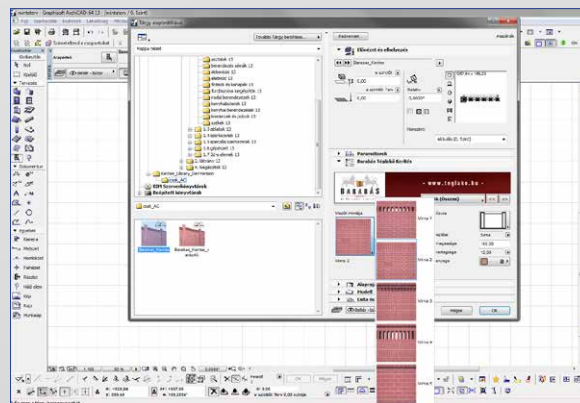
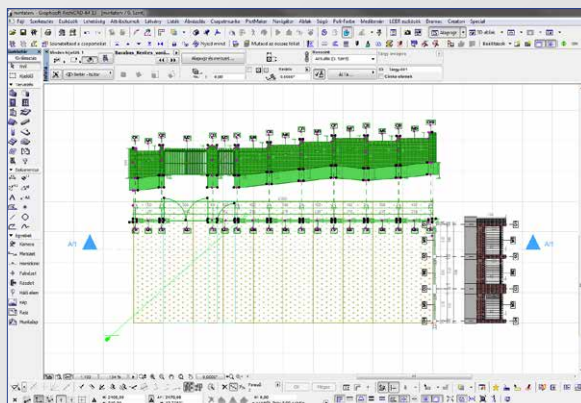
# BarabásTéglakő fence system designer



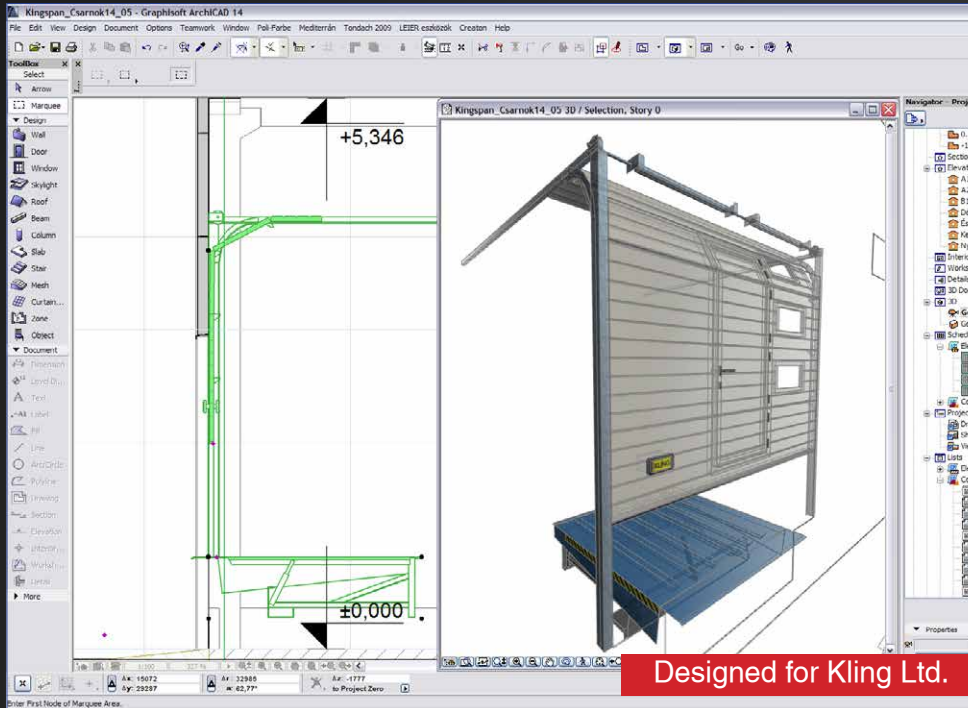
Our client needed an application to offer his customers (Architects and layman). Our solution is a GDL Library, which is available for ArchiCAD users and online clients as well. The wizard helps the users to go through the fence definition and our client to sell his product.

## Key features:

- Online and ArchiCAD use
- wizard style user interface
- easy to use
- nice visualisation
- exact component lists
- exact detail drawings with measurements
- real manufacturer products
- complex system definition in one step



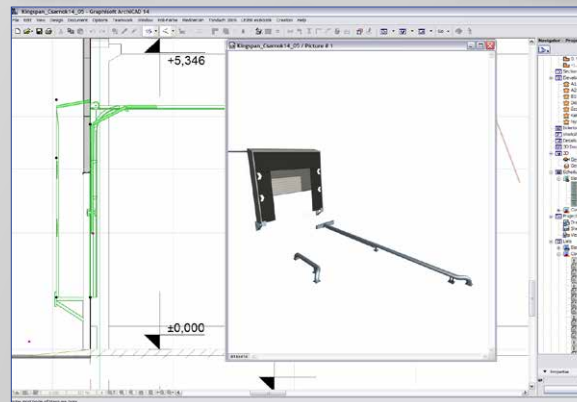
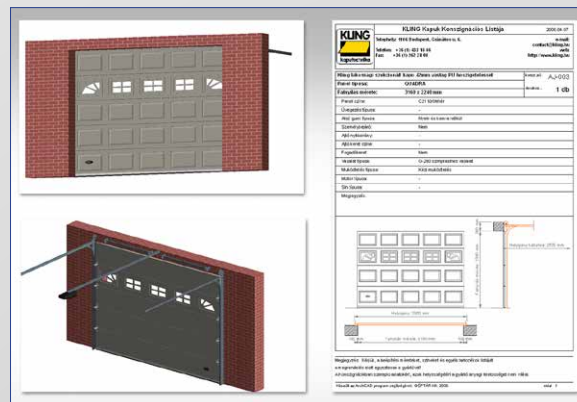
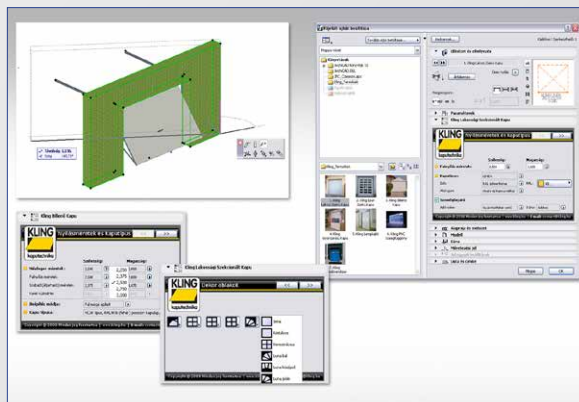
# Kling Gate Library



The ArchiCAD library contains the full product range of gate manufacturer. The GDL library has a simple configurator interface to set up all the necessary parameters for design and manufacturing. The library is available in English language as well.

## Key features:

- full gate product range
- easy to configurate
- exact 3D model and 2D symbol
- minimal space requirement
- free track path definition
- designed consignment lists (A4)
- real manufacturer products
- complex system definition in one step



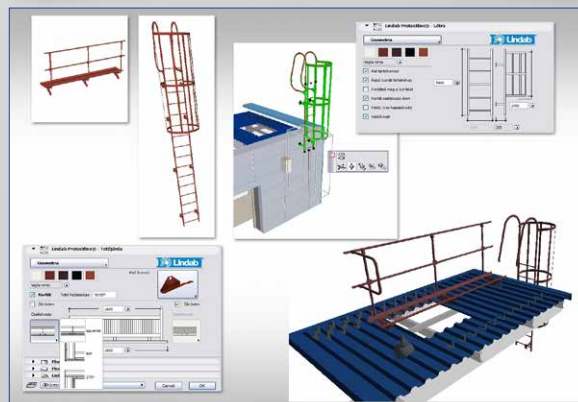
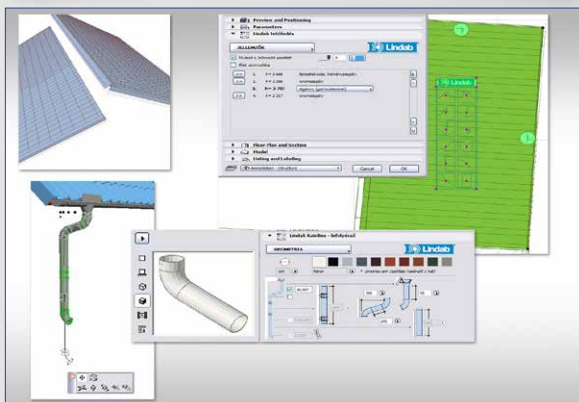
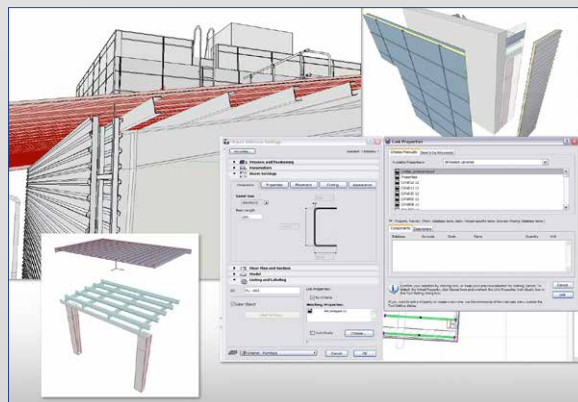
# Lindab sandwich panel designer



This solution supports the Architect implementing the full Lindab wall and roof structure into their ArchiCAD plans. The objects' user interface helps to set up all necessary parameters of the structure. Geometry editing and painting process is available in the 3D model or in section view.

## Key features:

- full structure definition in one step
- real 3D models and 2D drawings
- exact component lists
- free configuration methods
- real manufacturer products
- complex system definition in one step



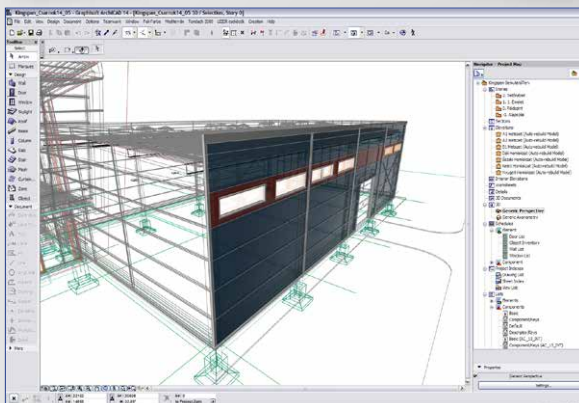
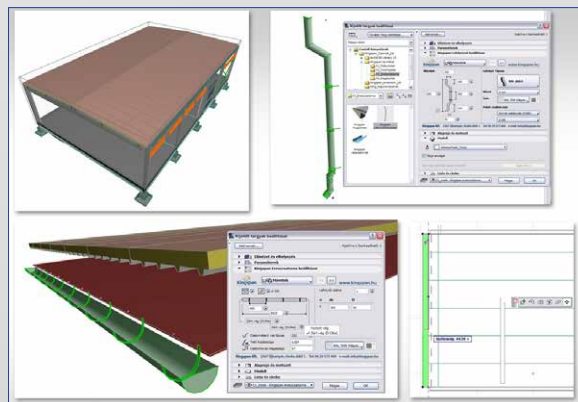
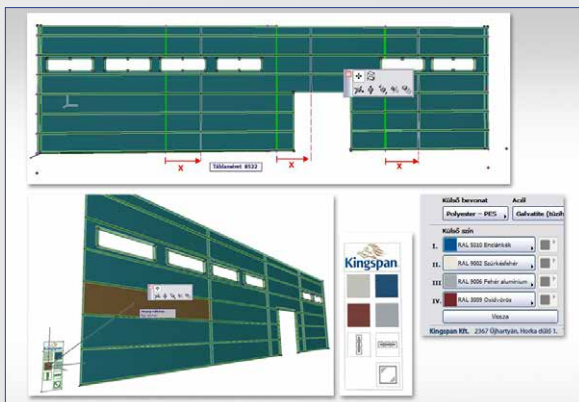
# Kingspan sandwich panel designer



The solution supports Architects implementing the full Kingspan wall and roof structure into their ArchiCAD plan. The objects user interface helps to set up all the necessary parameters of the covering system. Geometry editing and painting process is available in the 3D model or in section view.

## Key features:

- full structure placement in one step
- real 3D models and 2D drawings
- exact component lists
- free configuration methods
- edge and frame definitions
- real manufacturer products
- complex system definition in one step



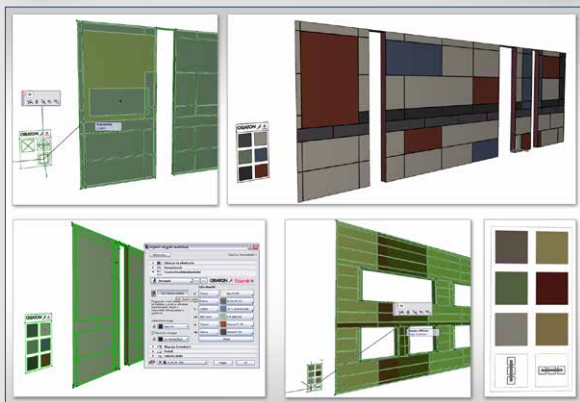
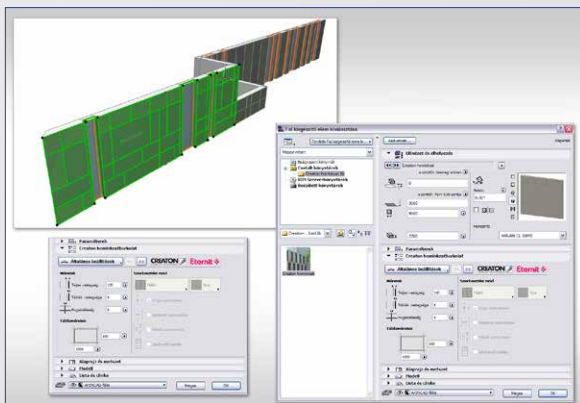
# Creton elevation covering system



Our client sells Eternit wall covering panels. For free elevation design we developed an application, which is available for all ArchiCAD users for free. Our Eternit panel definition system helps to create horizontal, vertical or full individual elevation design.

## Key features:

- fast and easy definition steps
- horizontal, vertical or individual placement
- free painting process
- real 3D models and 2D drawings
- exact component lists
- real manufacturer products
- complex system definition in one step



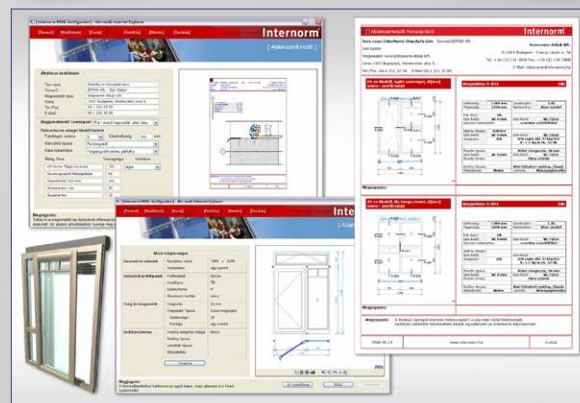
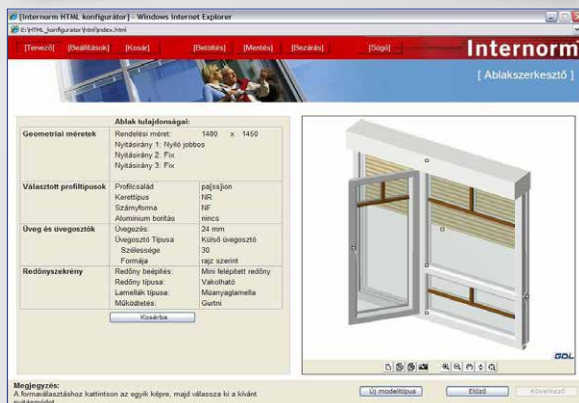
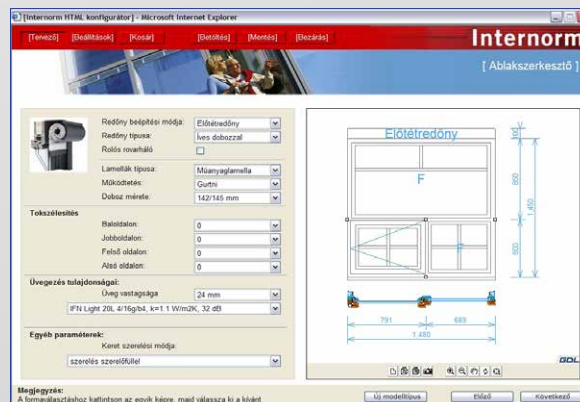
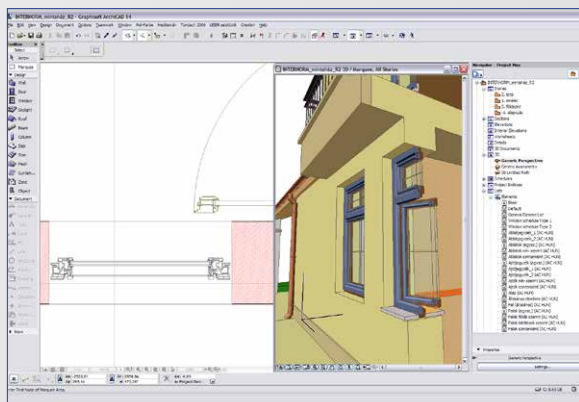
# Internorm Online Window-Door configurator



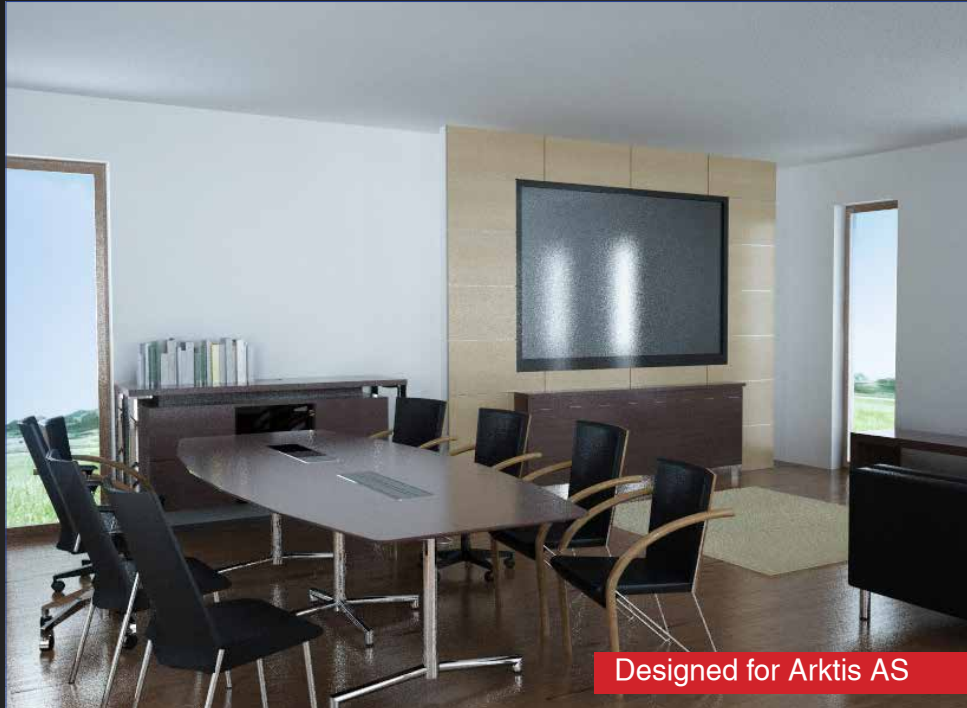
This GDL Library contains all the products, which is available in the Internorm product lists. The objects have a wizard style user interface, which helps to define all the necessary parameters for the product. User, who has no ArchiCAD can use online configurator version to create their consignment list.

## Key features:

- Wizard style user interface
- full product range
- real 3D model and 2D symbol
- Shading and glasing options
- Predefined consignment template
- real manufacturer products
- complex system definition in one step



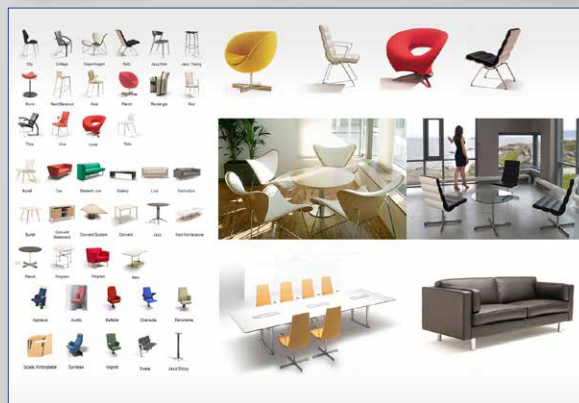
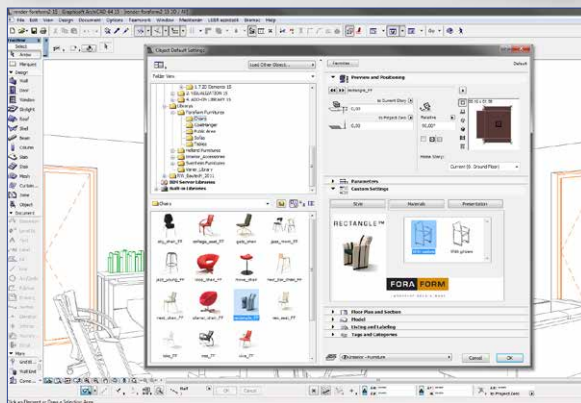
# ForaForm office furniture



We made this library for ARKTIS AS. They wanted a GDL library which looks well in ArchiCAD, but contains the full intelligence of GDL and low polygon numbers. The library contains more than 50 objects and represents more than 450 products.

## Key features:

- low poly, but good looking furniture
- manufacturer style user interface
- real manufacturer products
- manufacturer defined materials



# PaolaLenti outdoor furniture



This library has been made for IDC AG Zentralschweiz. They need this library to show it on a fair, where they have the original furniture as well. The library contains low poly, free shape furniture and accessories, that are easy to display in ArchiCAD.

## Key features:

- low poly, but good looking furniture
- manufacturer style user interface
- real manufacturer products
- manufacturer defined materials



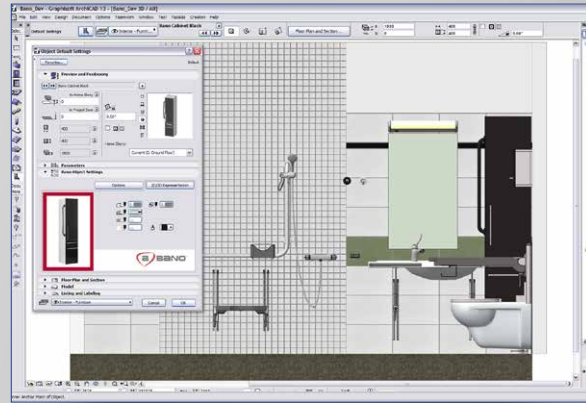
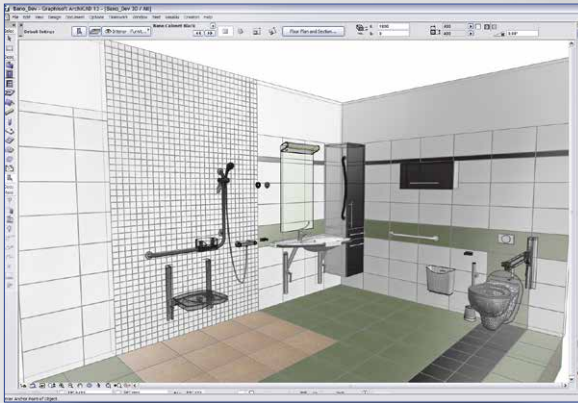
# Bano healthcare furniture



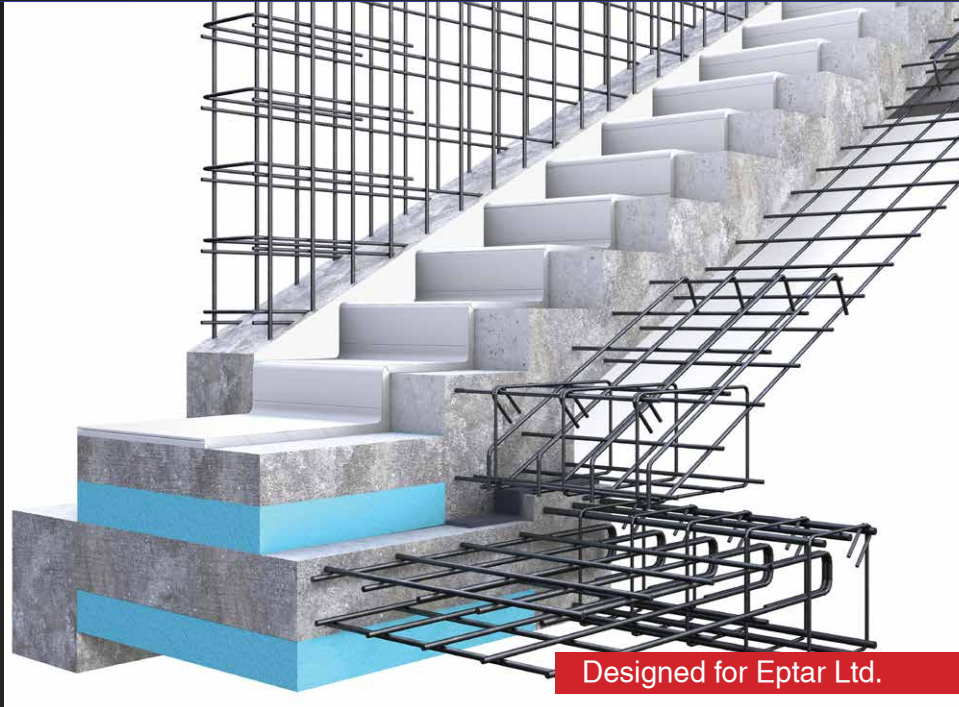
This Bathroom furniture has been made for ARKTIS AS. They needed a full healthcare furniture library which represents real products in ArchiCAD.

## Key features:

- low poly, real 3D shapes
- manufacturer style user interface
- real manufacturer products
- manufacturer defined materials



# Reinforcement Solution for ArchiCAD



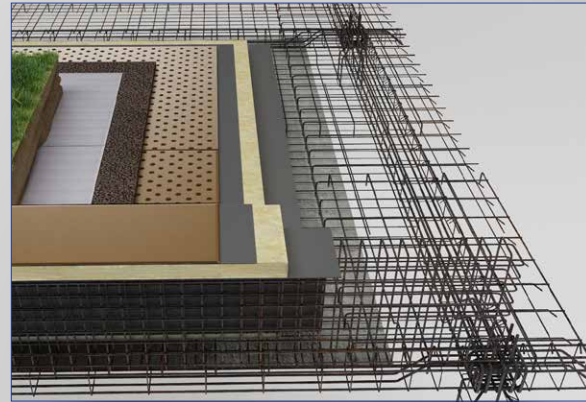
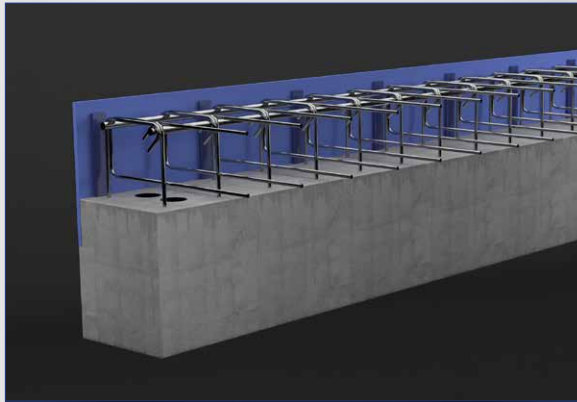
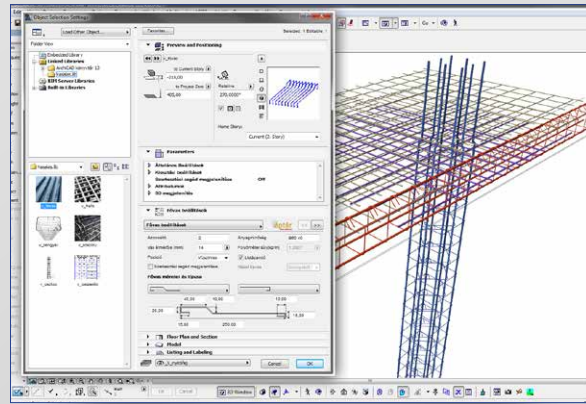
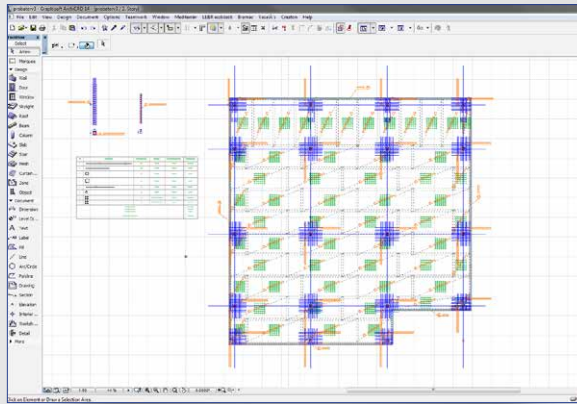
This library was developed to support Civil engineers, who want to work with ArchiCAD. The application helps to model the reinforcement bars in 2D and 3D as well. After the rebar placement, users can simply collect rebar items, optimise the ID numbers and create cutting lists.

## Key features:

- fast and easy rebar placement
- simple, one step rebar number check and control
- correct 2D drawings
- 3D rebar models
- complex system definition in one object
- exact calculation and rebar list

## Key features:

- enhanced general settings
- several display and label options
- dimension unit setting
- text style settings



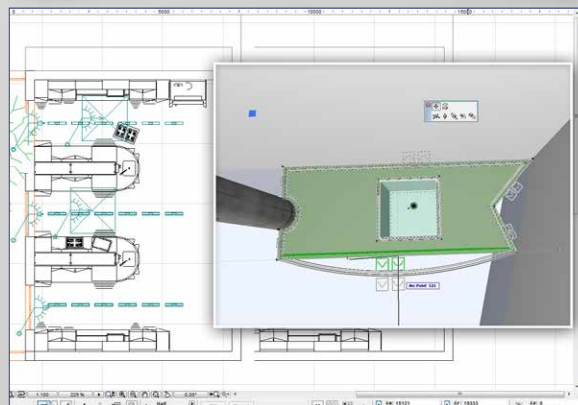
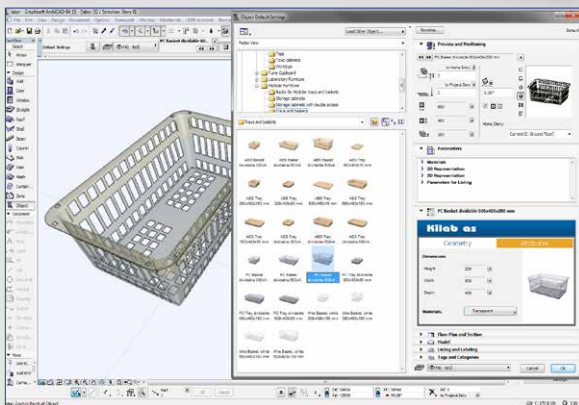
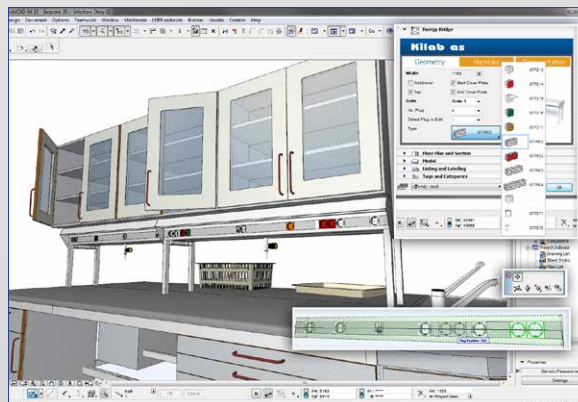
# Kilab - Laboratory furniture library



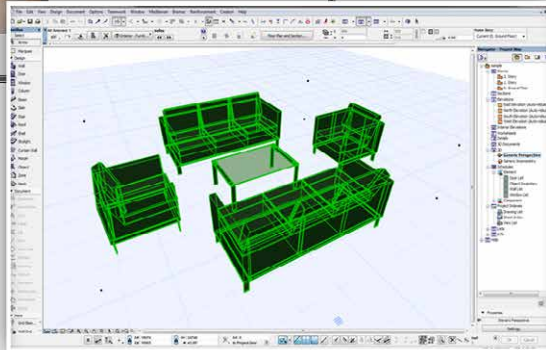
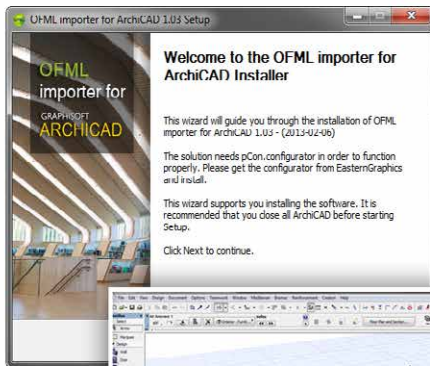
We made this library for ARKTIS AG. The whole product range of Kilab - a manufacturer dedicated to making laboratory furniture - is included in the product library. The library consists of more than 300 products, enabling users to create the complete furnishing for laboratories.

## Key features:

- real manufacturer products
- option for standard and custom sizes
- manufacturer defined materials
- free form worktops
- realistic furnishing and equipment



# OFML importer for ArchiCAD

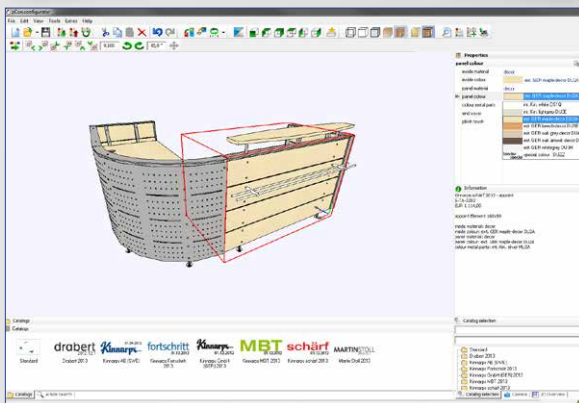
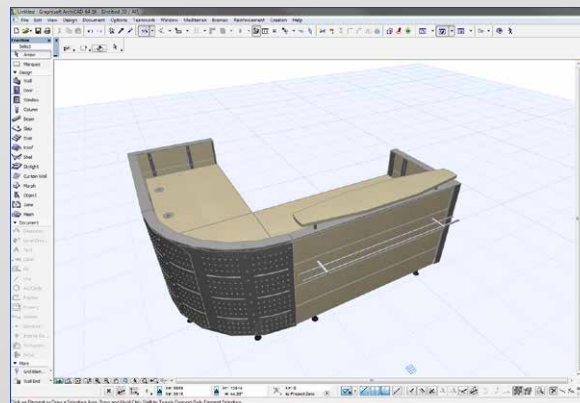
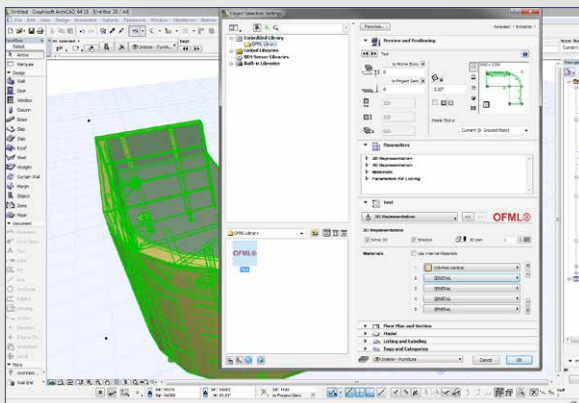


Graphisoft Germany

This tool was created for Graphisoft Germany. OFML based objects can be imported into ArchiCAD 16 via pCon.configurator from Eastern Graphics. The solution makes sure that the products of German furniture manufacturers can be placed and used in ArchiCAD 16.

## Key features:

- import of separate or combined objects
- objects can be updated
- exact component list, from combined objects as well



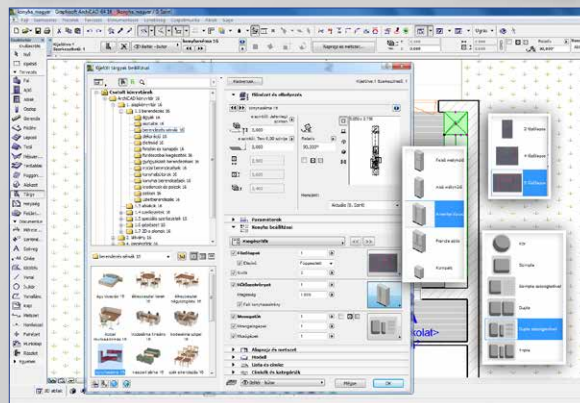
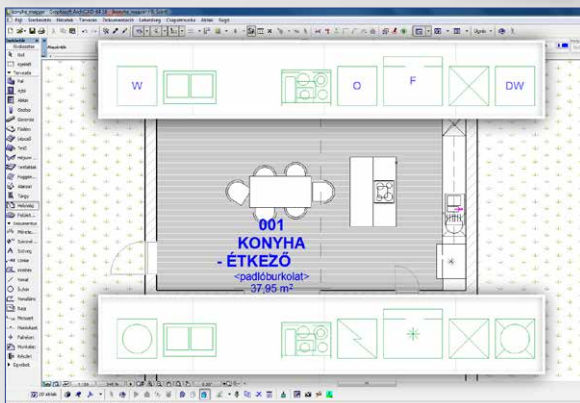
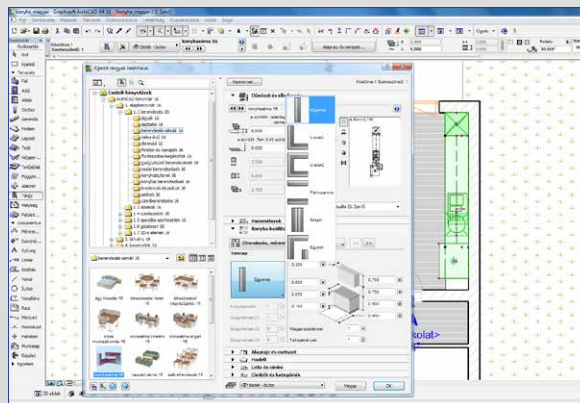
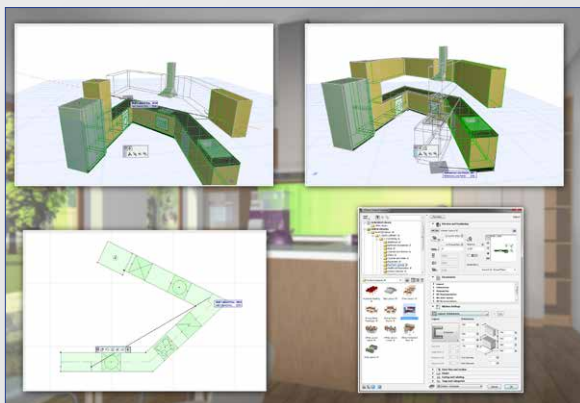
# Kitchen layout for ArchiCAD16



This tool was developed for the objects library in ArchiCAD 16 for Graphisoft. The object was designed to provide a quick and easy to use solution when users draw plans for kitchens. There is no need to place cabinets and accessories one- by-one. In a few steps, the basic kitchen layouts can be easily set according to the users' preferences and equipped with all the built-in accessories, from refrigerators to washing machines.

## Key features:

- Simple 3D model, to illustrate proportions
- Pre-defined basic kitchen layouts
- Great freedom in defining custom layouts
- Predefined path for placing accessories



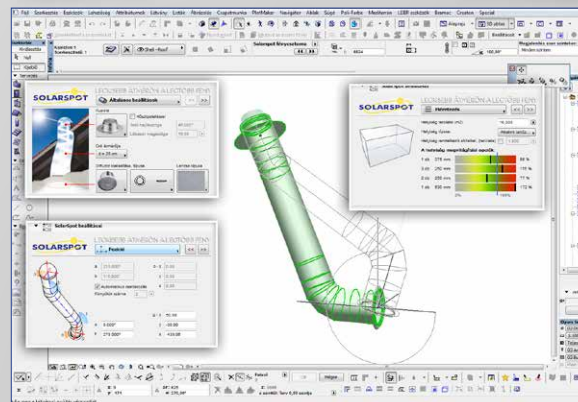
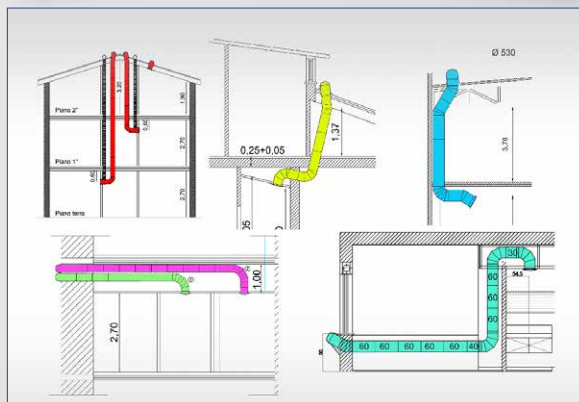
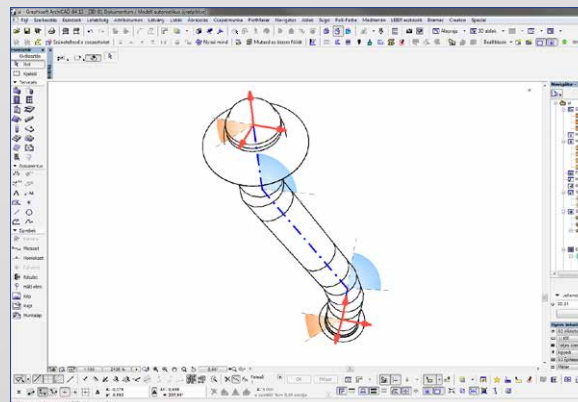
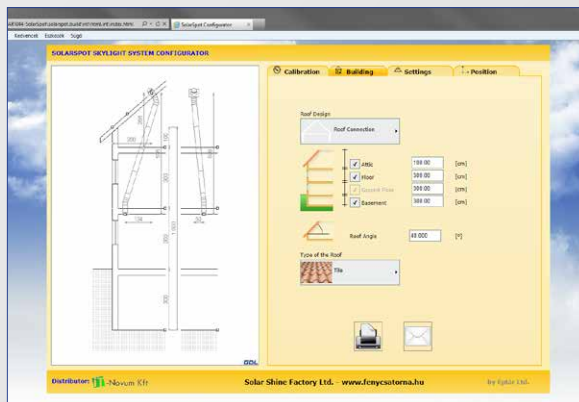
# Solarspot light tube configurator



Solarshine Factory Kft. requested us to make this light tube configuring solution for ArchiCAD and online use (via GDL Webcontrol). The solution enables architects to use the newest lighting systems in their plans in ArchiCAD.

## Key features:

- configuration of light tubes for home and industrial use
- whole system definition in one step
- flexible moving of the tube can be traced on the screen
- calibration of necessary amount of light tubes, based on the properties of the room
- can be used as simple object or skylight



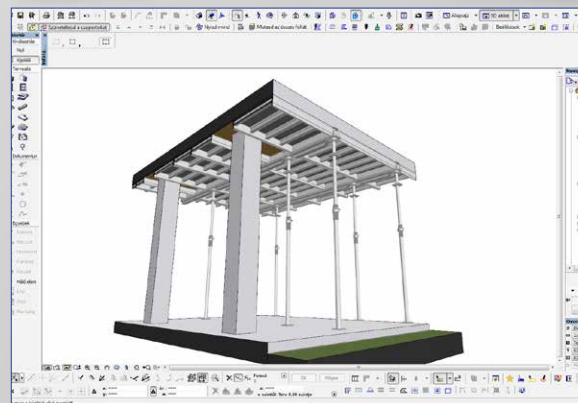
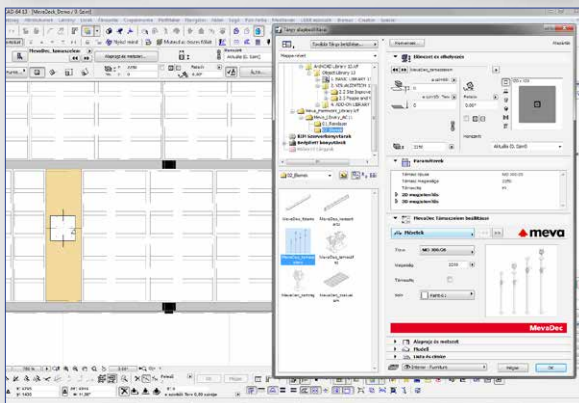
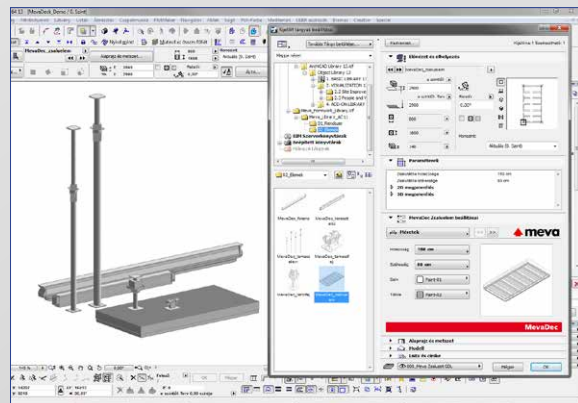
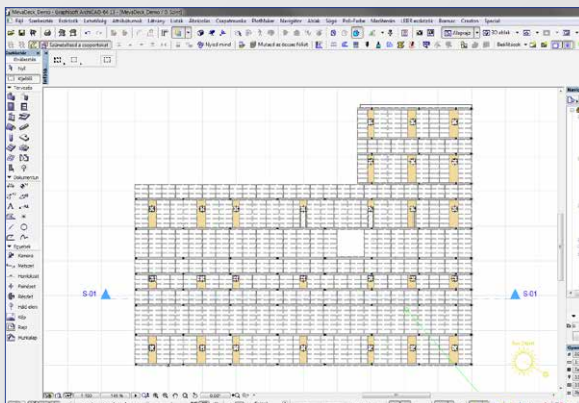
# MevaDec Slab Formwork system



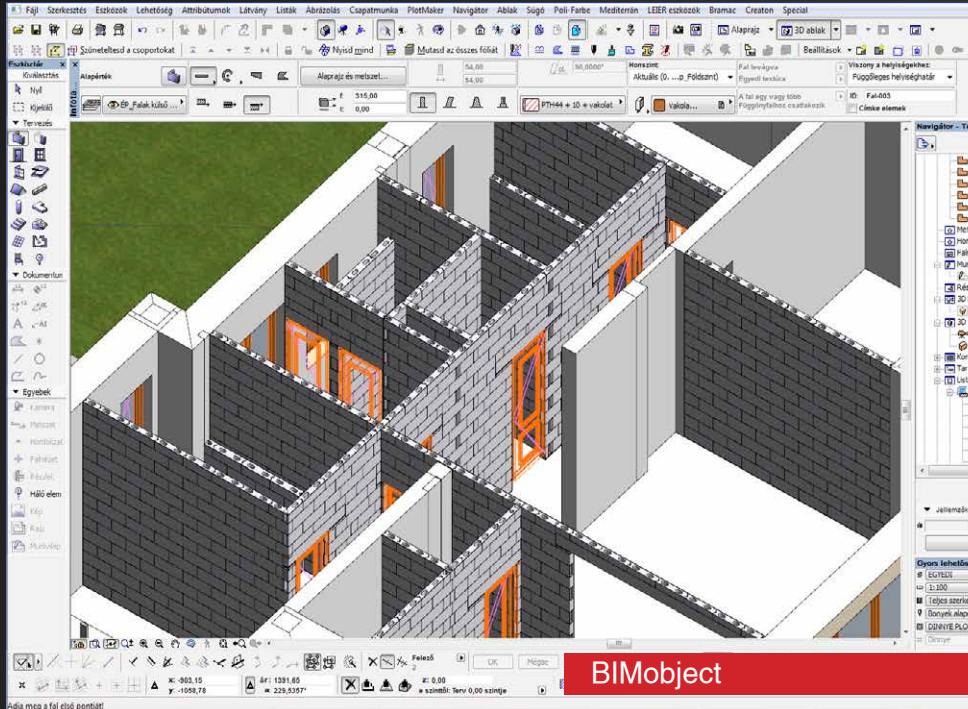
GDL library made for MEVA Zsalurendszerek Zrt. The library contains all the components that are used in MevaDec Slab Formwork system, enabling users to assemble realistic formwork for slabs.

## Key features:

- individual object for each system component
- easy and quick formwork definition with preconfigured systems
- exacts component list



# BIMobject Solutions and libraries



We developed numerous libraries in cooperation with BIMobject. These are a few examples of our work:

## Weber - Wall accessory solution

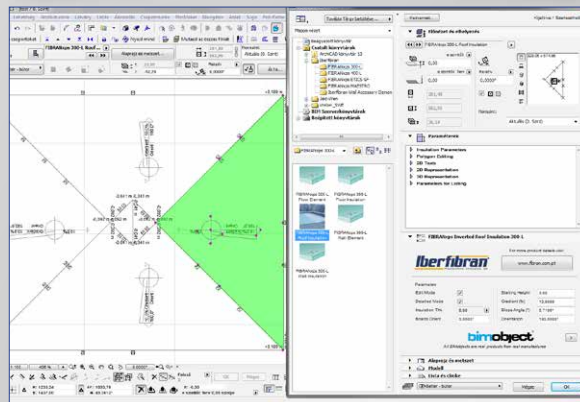
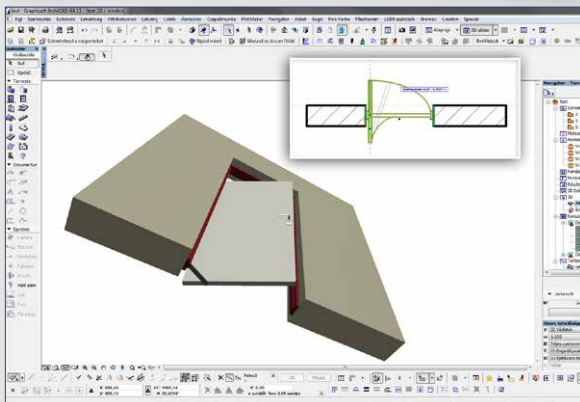
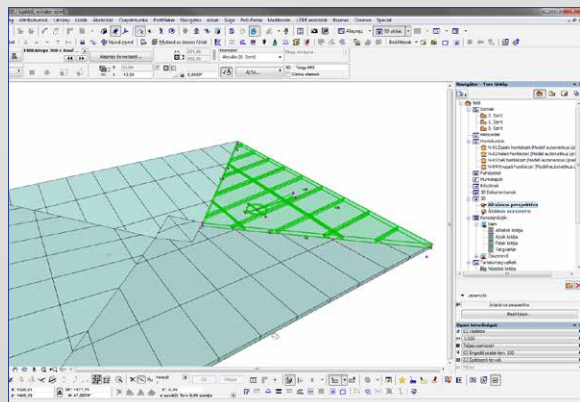
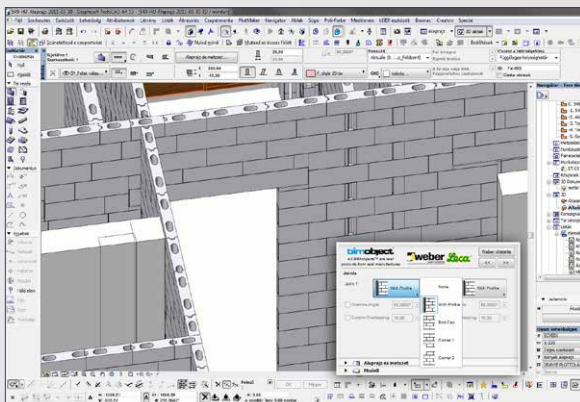
- determine brick bonds for partition walls
- handling of wall connections and lintels

## Jeld-Wen - rotational door

- door with special functioning
- realistic opening on 3D and 2D view

## Iberfibran - solution for the Portuguese insulation manufacturer

- calculation of slopes for polygonal flat roofs
- insulation for walls
- exact component list



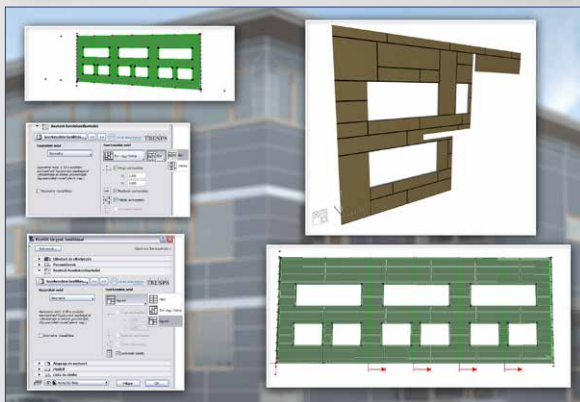
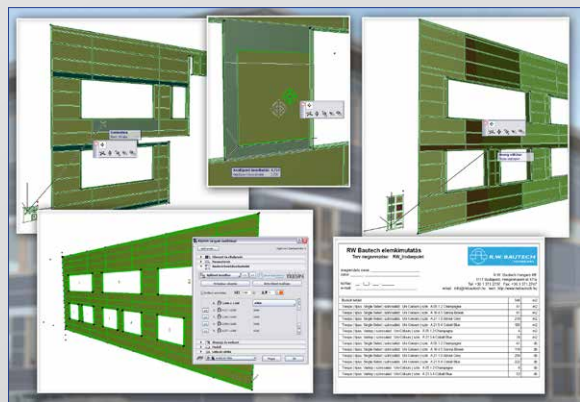
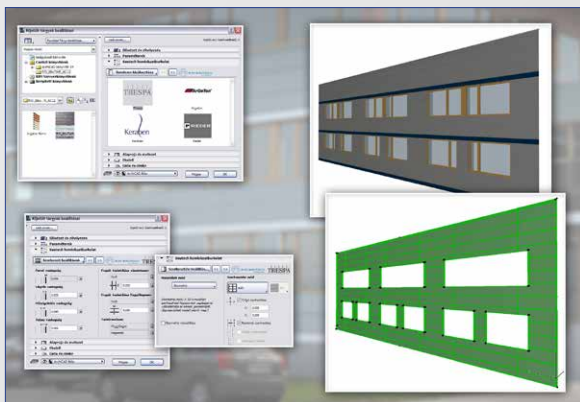
# RW Bautech facade covering system



ArchiCAD Wall Accessories based solution. RW Bautech solution lets users create facade design with different product families: Trespa, ArGeTon, Rieder and Keraben. User can choose from these product families and define the facade design with the selected products.

## Key features:

- complex system configuration in one step
- exact component list
- edge and frame definitions
- real manufacturer products
- free configuration methods



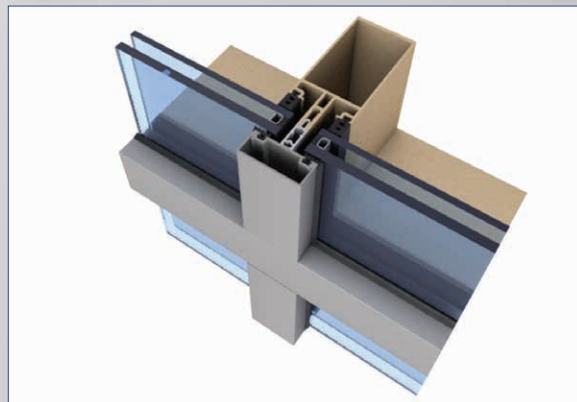
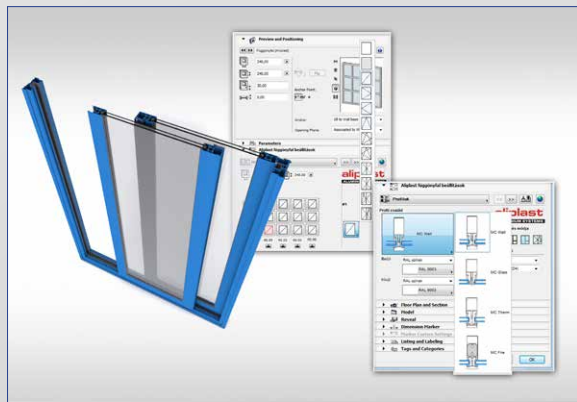
# Aliplast opening and curtain wall library and configurator



This unique opening library was created for the manufacturer of aluminium profiles, Aliplast. Detailed objects represent the Aliplast doors, windows and curtain walls. The most singular feature is the complex window and curtain wall configurator object, which lets users create unusual window and curtain, in a few simple steps.

## **Key features:**

- real aluminium profiles
- several profile families
- custom window
- curtain wall configuration
- prepared listing templates



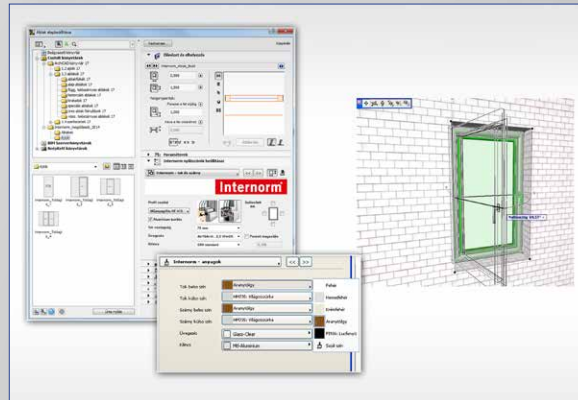
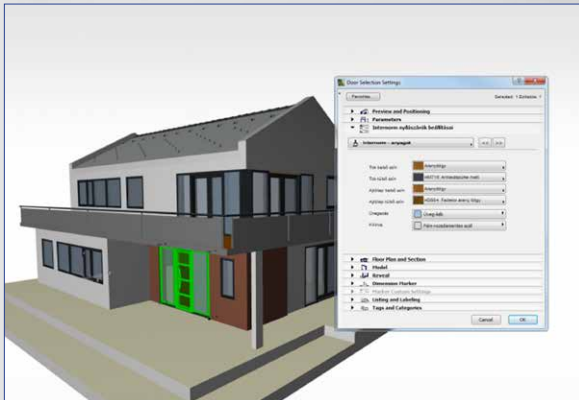
# Internorm ArchiCAD opening library



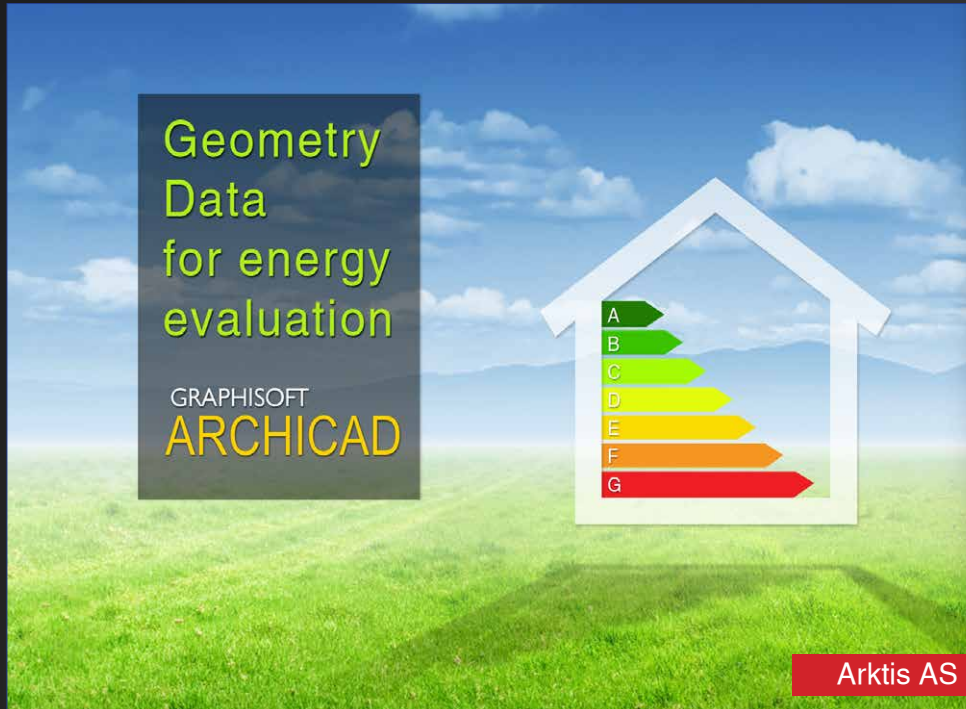
Our customer wanted to have a user friendly, simple and understandable library for their window and door products. The library is loosely based on the functions of ArchiCAD openings and it lets the user experience the new opening library quickly and effectively.

## **Key features:**

- simple windows and doors
- manufacturer materials and profiles
- simple functions



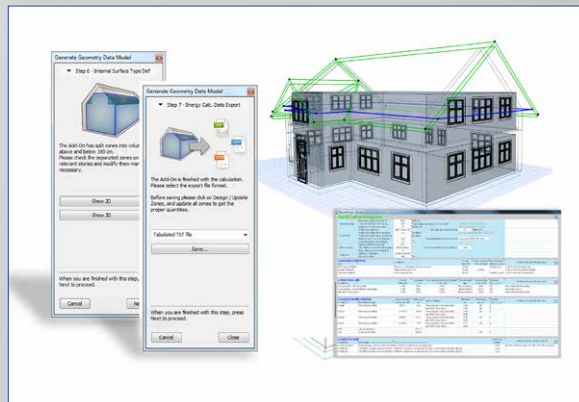
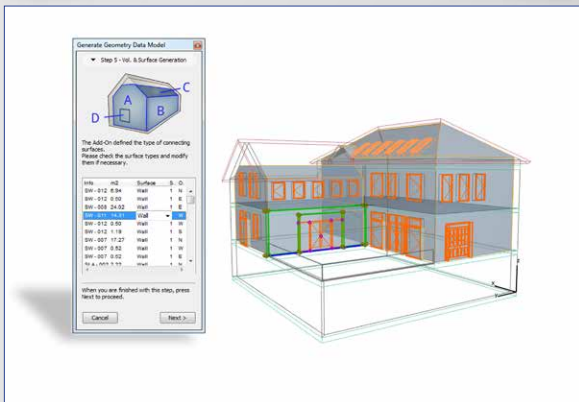
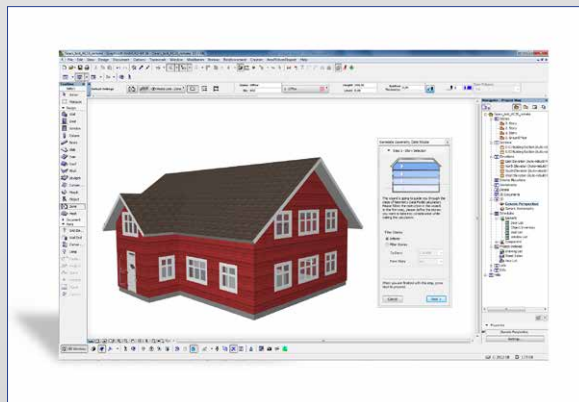
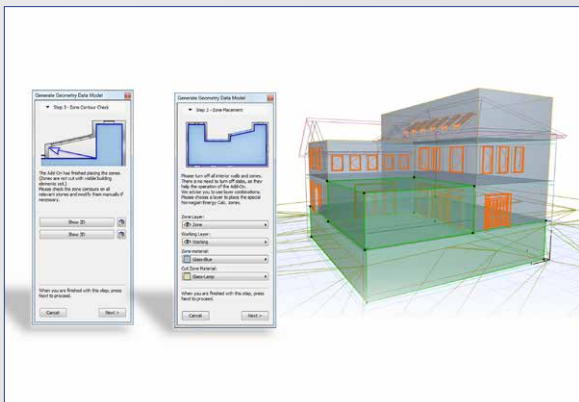
# Geometry Data Collection for Energy Evaluation in ArchiCAD



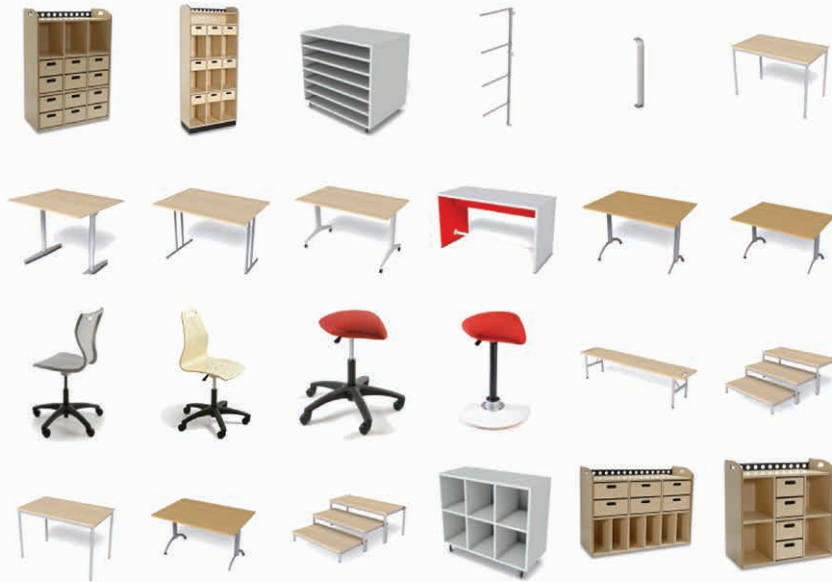
This ArchiCAD Add-on can be helpful for exporting geometry data of the ArchiCAD building model, according to the requirements of Norwegian Energy Standard. Geometry data can be generated through a simple wizard, and exported to Excel, TXT or other formats.

## Key features:

- automatic collection of surfaces
- user override ability
- export of data in multiple formats
- step-by-step wizard
- easy to use



# Grande library

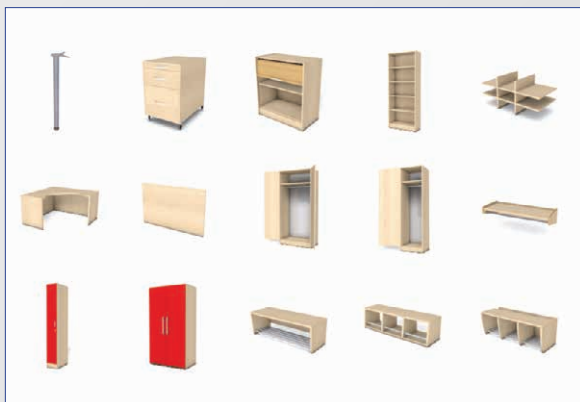


Arktis AS.

Furniture library with the full Grande product range. The library contains numerous items for different purposes, from children's furniture to well-designed pieces into kitchens or offices. The library was made for Arktis AS.

## Key features:

- good looking, low poly furniture pieces
- manufacturer style user interface
- great product range of real products
- manufacturer defined materials



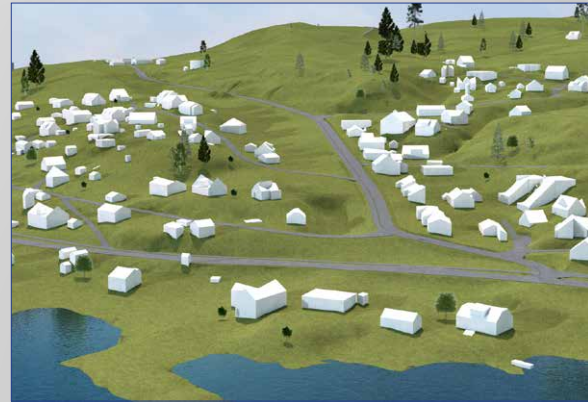
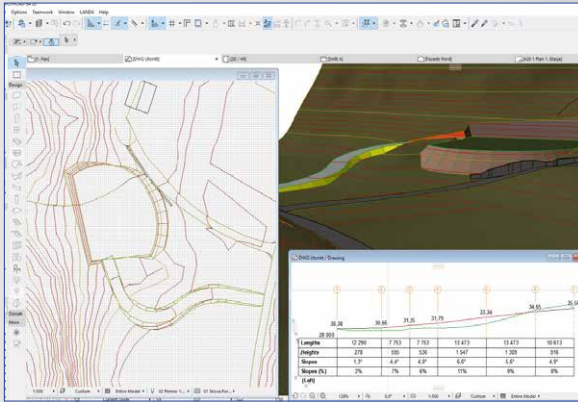
# Architerra Plus 1



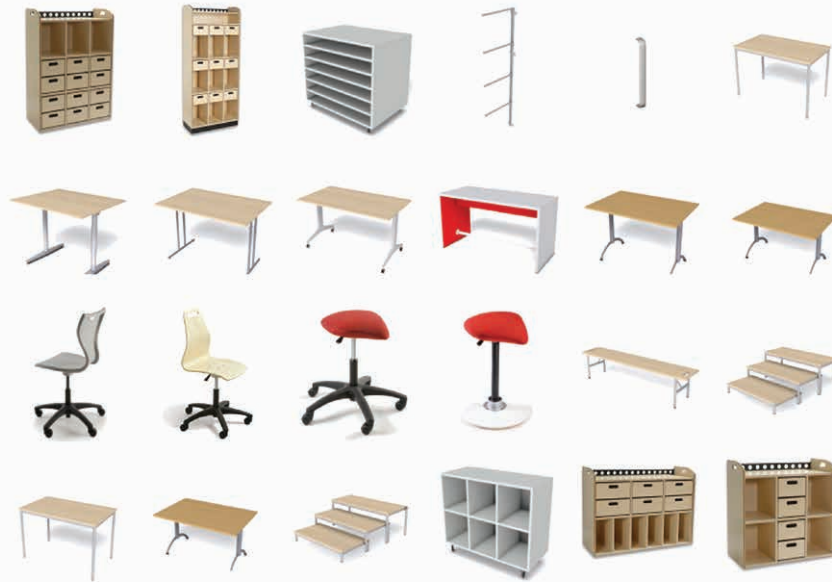
ArchiTerra is the solution for ArchiCAD users to create and manage 3D terrain models. It is a useful tool especially if you need to work with large sites, allowing the insertion of other elements such as roads, plateaus, buildings and others.

ArchiTerra was developed and created to solve a particular problem for ArchiCAD users: the creation and management of tridimensional land models.

ArchiTerra helps to create solutions for terrains by drawing your own site or importing data from different types of files, like DXF, Text or Shape files and allows you to work and visualize the morphology in 2D and 3D.



# Grande library

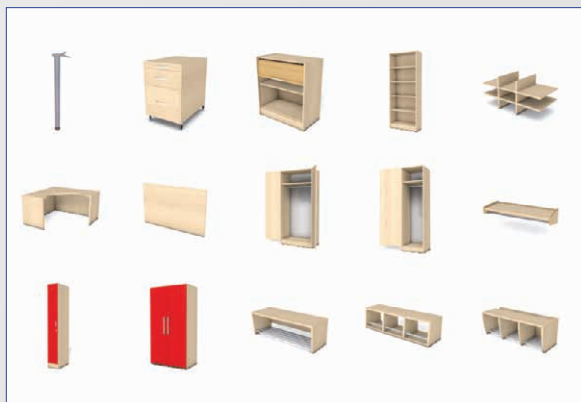


Arktis AS.

Furniture library with the full Grande product range. The library contains numerous items for different purposes, from children's furniture to well-designed pieces into kitchens or offices. The library was made for Arktis AS.

## Key features:

- good looking, low poly furniture pieces
- manufacturer style user interface
- great product range of real products
- manufacturer defined materials



# Contact us

---

**Éptár Kft.**

+36 1 225 73 55

info@eptar.hu

**Mihály Csizmadia**

+36 30 699 9097

mcsizmadia@eptar.hu

[www.eptar.hu/bim\\_shop](http://www.eptar.hu/bim_shop)